

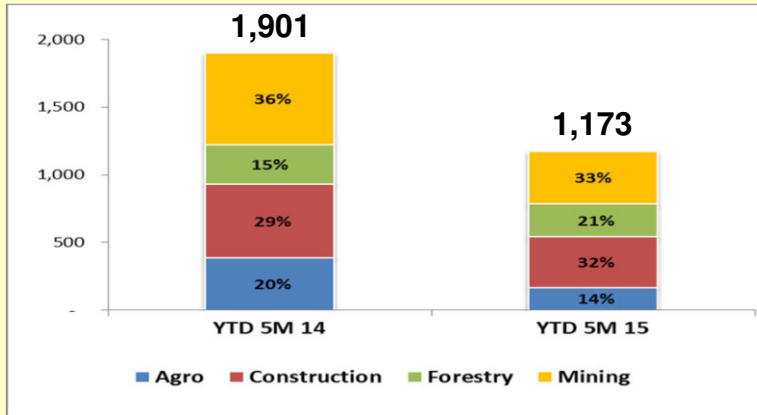


# UNITED TRACTORS

## Operational Updates as of May 2015

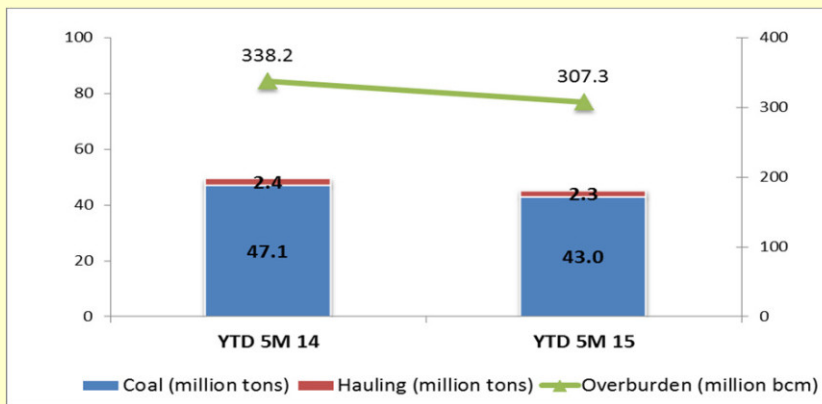
**Construction Machinery**  
United Tractors

**Komatsu YTD Sales Volume (in unit)**



Komatsu monthly sales volume for May 2015 was 207 units. Market share for YTD 5M 15 was 37%.

**Coal Production & Hauling and Overburden Removal**

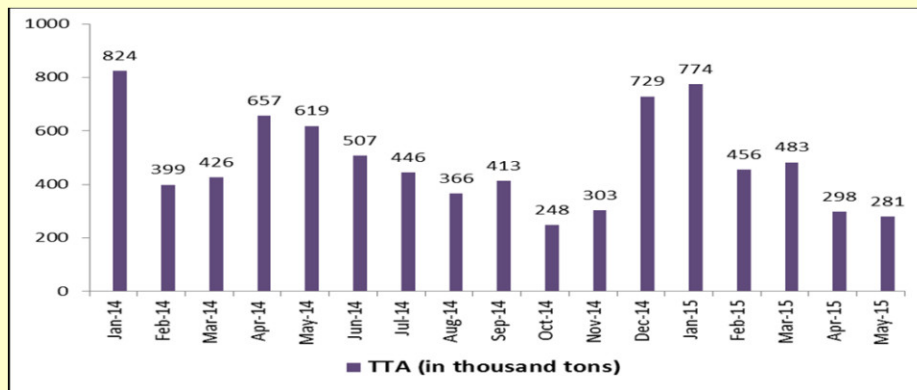


Note: Hauling refers to coal transported by PAMA from mine to stockpile/ jetty, produced by other contractor.

**Mining Contracting**  
Pamapersada Nusantara

**Coal Mining**  
TTTA Mines

**Coal Sales Volume (in 000 ton)**



YTD 5M 14: 2,925,000 tons

YTD 5M 15: 2,292,000 tons

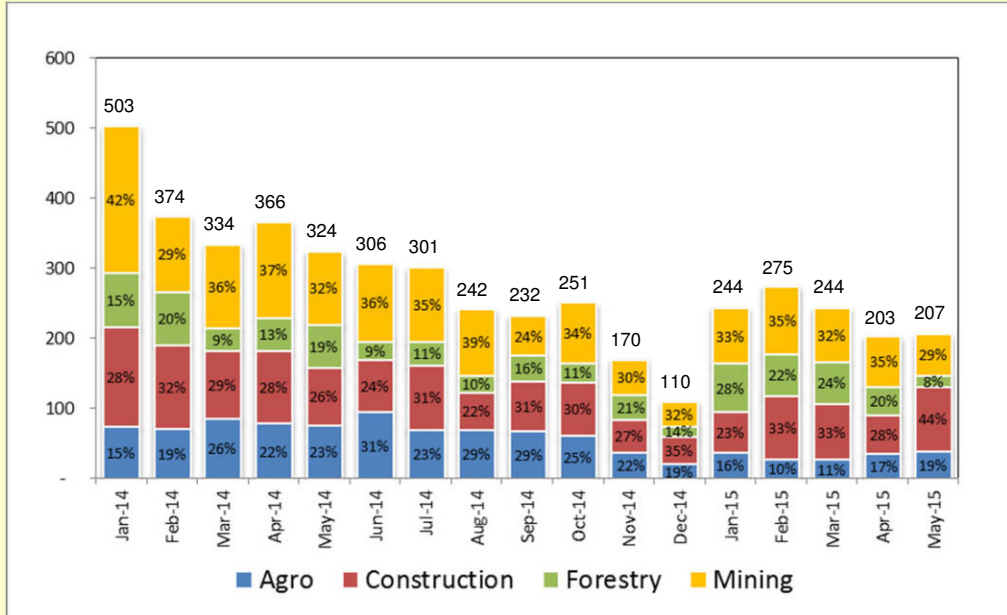


# Historical Performance

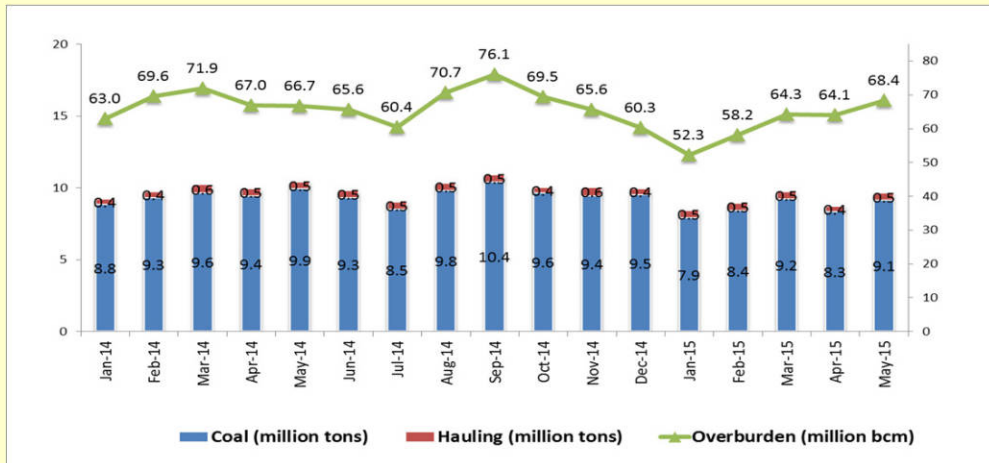


Construction Machinery  
United Tractors

Historical Komatsu Monthly Sales Volume (in unit)



Historical Coal Production & Hauling and Overburden Removal



Note: Hauling refers to coal transported by PAMA from mine to stockpile/ jetty, produced by other contractor

Mining Contracting  
Pamapersada Nusantara

